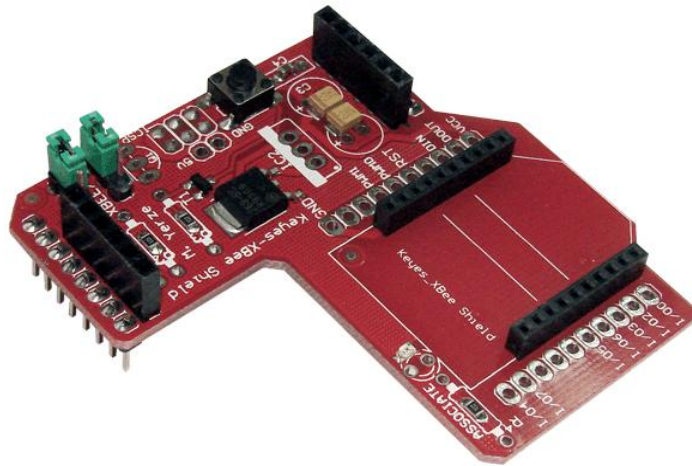


Arduino Xbee Sensor Shield For Arduino V5 With RS485 and Bluetooth Interface



Description:

1. extension of 14 digital IO ports (12 servo interface) and power;
2. six analog IO ports and power;
3. one digital external power port terminal;
4. Digital-port external power supply and an onboard power supply automatic switching;
5. one External power input terminal and an input pin;

Description:

1. extension of 14 digital IO ports (12 servo interface) and power;
2. six analog IO ports and power;
3. one digital external power port terminal;
4. Digital-port external power supply and an onboard power supply automatic switching;
5. one External power input terminal and an input pin;
6. RS485 interface;
7. reset button;
8. xbee/Bluetooth Bee Bluetooth wireless data transmission interface;
9. APC220/Bluetooth V3 Bluetooth wireless data transmission interface;

10. IIC/I2C/TWI interface;

11. 3.3V output port;

12. SD card module interface

Specifications:

This For Arduino Xbee Sensor Shield IO Expansion Board is evolving. It is now supporting Xbee.. It not only supports RS485, APC220, Bluetooth communication, servo control but also supports SD card which provides the ultimate functional expansion for Arduino so far.

* Support Xbee (Xbee pro)

* Support RS485

* Support APC220

* Support Bluetooth

* Support SD card read/write